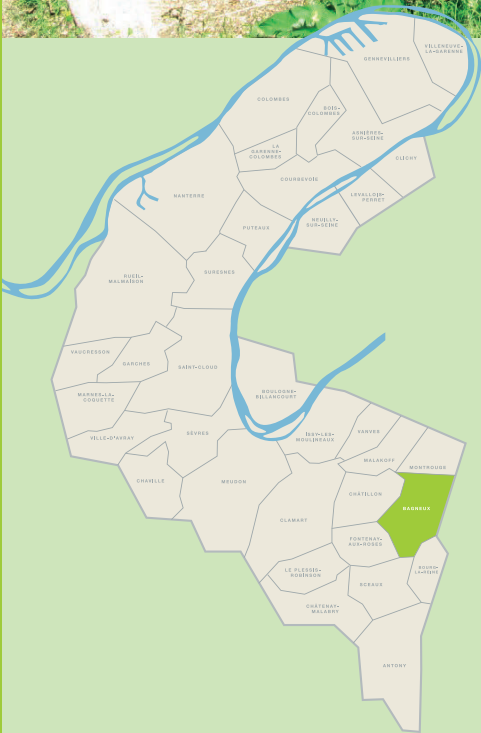


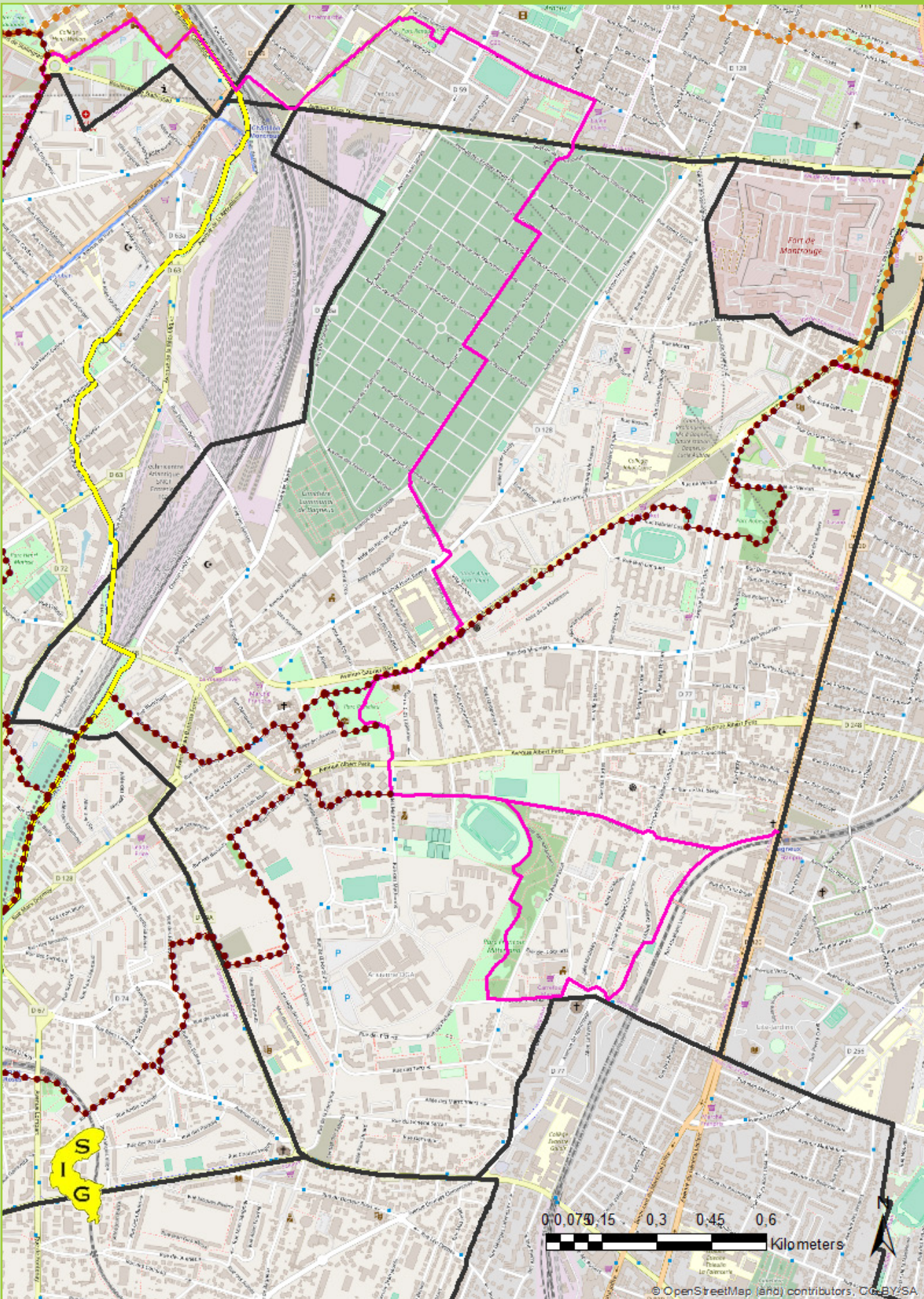






C. Chênerie-FFRandonnée

Butte de Bagneux



Bagneux



-  GR 655 (0,55 km)
-  PR 8 : sentier des coteaux (5,19 km)
-  PR 9 : sentier des buttes (5,58 km)
-  PR 10 : sentier des forts (0,33 km)



1

C. Chehere-FFrandonnée



2

Ville de Bagneux

- 1 Rue des Blains
- 2 Parc Richelieu
- 3 Centre-ville
- 4 Église Saint-Hermeland
- 5 Cimetière Parisien



3

Ville de Bagneux



4

Ville de Bagneux



5

C. Chehere-FFrandonnée